



Boosting Power System Operation Economics via Closed-Loop Predict-and-Optimize

Xianbang Chen, Ph.D. Candidate, xchen130@stevens.edu
Lei Wu, Anson Wood Burchard Chair Professor, lei.wu@stevens.edu

Stevens Institute of Technology

June 28, 2023

For the 2023 FERC Software Conference



Content

***Boosting
Power System
Operation Economics
via
Closed-Loop
Predict-and-Optimize
(C-PO)***

I

Introduction

II

Approach 1: Feature-Driven C-PO

III

Approach 2: Bilevel C-PO

IV

Summary

Introduction

Approach 1:
Feature-Driven C-PO

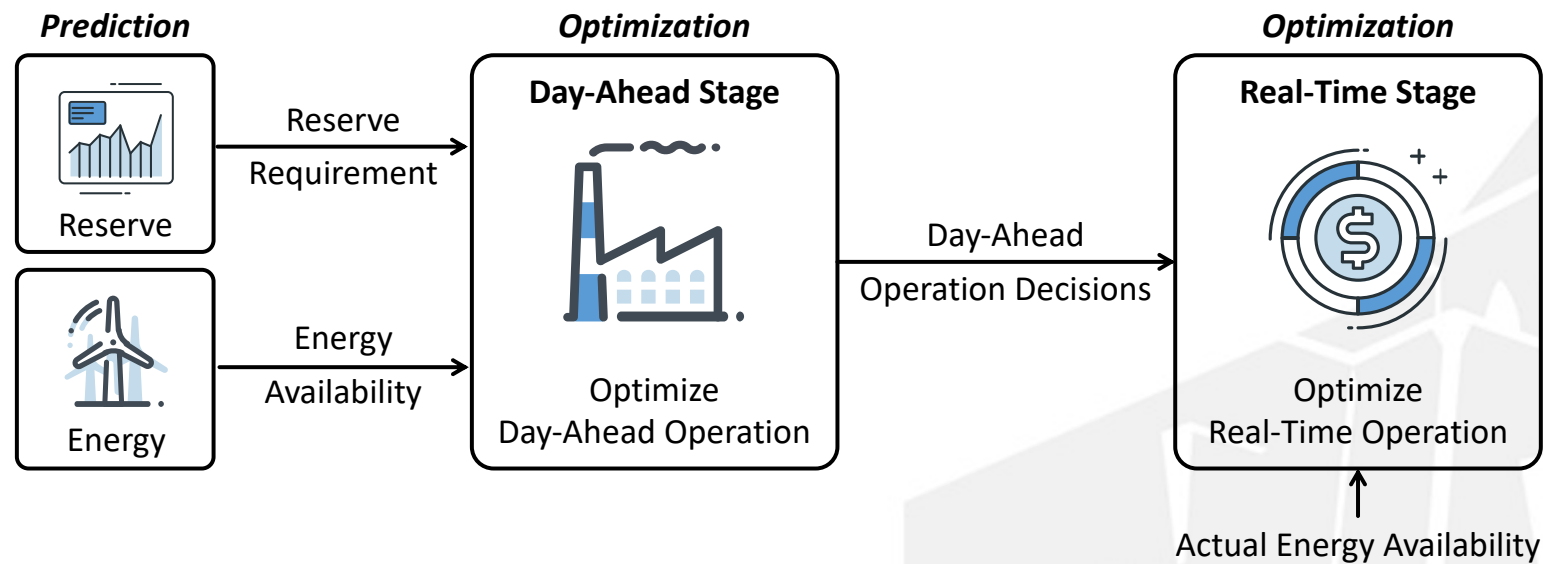
Approach 2:
Bilevel C-PO

Summary



Background: Power System Operations in O-PO

- Operations in Open-Loop Predict-then-Optimize (O-PO) Framework**



- Operators' Goal: Minimum Operation Cost**



Background: Power System Operation Models

- **Day-Ahead Unit Commitment (Mixed-Integer Programming)**

$z(\hat{\mathbf{w}}) = \min_x \mathbf{c}^\top \mathbf{x}$ Decision \mathbf{x} : On/off state, base-point generation, reserve deployment of units.

s. t. $\mathbf{x} \in \mathcal{X}(\hat{\mathbf{w}}, \hat{\mathbf{r}})$ $\hat{\mathbf{w}}$ and $\hat{\mathbf{r}}$ are vectors of renewable and reserve predictions.
 $\mathbf{x} \in \{0,1\}^m \times \mathbb{R}^n$

- **Real-Time Economic Dispatch (Mixed-Integer Programming)**

$z^{ed}(\mathbf{x}^*, \tilde{\mathbf{w}}) = \min_y \mathbf{d}^\top \mathbf{y}$ Decision \mathbf{y} : On/off state of quick-start units, generation adjustment, reserve usage.

s. t. $\mathbf{y} \in \mathcal{Y}(\mathbf{x}^*, \tilde{\mathbf{w}})$ $\tilde{\mathbf{w}}$ is vector of actual energy availability.
 $\mathbf{y} \in \{0,1\}^p \times \mathbb{R}^q$

- **Evaluate Operation Economics**

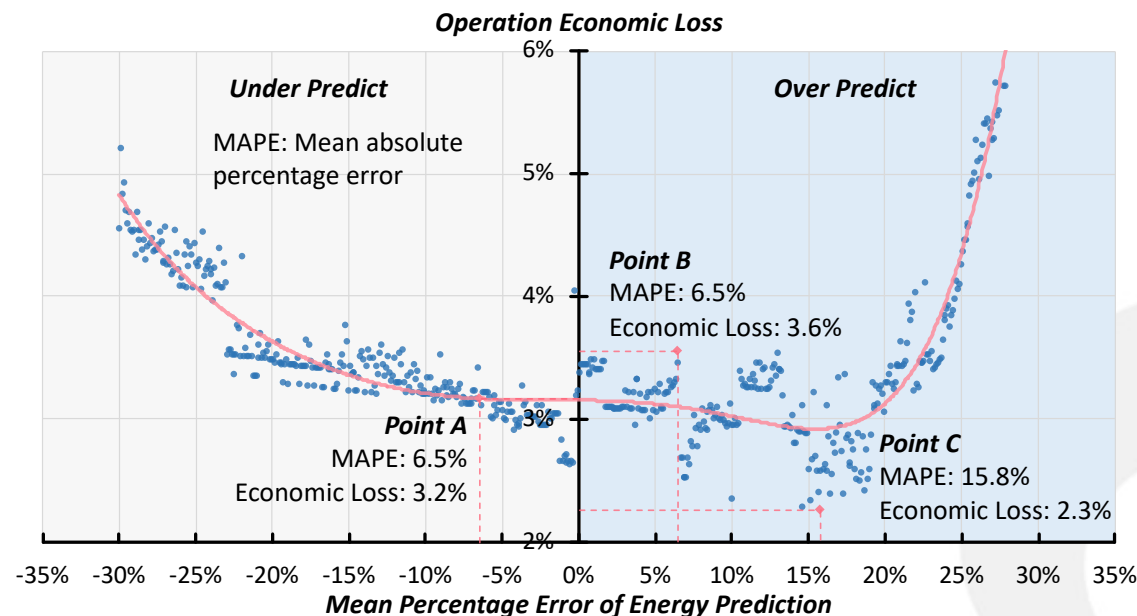
After solving the problems, the **actual operation cost** is available. A **lower operation cost** indicates a **better operation economics**.



Motivations: Flaws in Open-Loop Predict-then-Optimize (O-PO)

- **Reserve Requirement is Redundant**
- **Statistically More Accurate Prediction \nRightarrow Better Operation Economics**

Samples with different prediction errors on an IEEE 118-bus system



Point A vs Point B

The **same prediction error (MAPE = 6.5%)** enable **different economic losses (3.2% vs 3.6%)**.

Point B vs Point C

A **worse prediction error (MAPE = 15.8%)** enables a **lower economic loss (2.3%)**.

Why?

Power systems are complex and nonlinear.

$$\text{Economic Loss} = \frac{\text{Operation Cost}^{\text{With Error}} - \text{Operation Cost}^{\text{Error-Free}}}{\text{Operation Cost}^{\text{Error-Free}}} \times 100\%$$

Introduction

Approach 1:
Feature-Driven C-PO

Approach 2:
Bilevel C-PO

Summary



Motivations: Flaws in Open-Loop Predict-then-Optimize

*“In many real-world applications, the **ultimate goal** is not to make good predictions, but rather to use the often noisy predictions to **make good decisions**.”*

----- Yoshua Bengio
in Using a Financial Training Criterion Rather than a Prediction Criterion, 1997

Introduction

Approach 1:
Feature-Driven C-PO

Approach 2:
Bilevel C-PO

Summary



Content

***Boosting
Power System
Operation Economics
via
Closed-Loop
Predict-and-Optimize
(C-PO)***

I

Introduction

II

Approach 1: Feature-Driven C-PO

III

Approach 2: Bilevel C-PO

IV

Summary

Introduction

Approach 1:
Feature-Driven C-PO

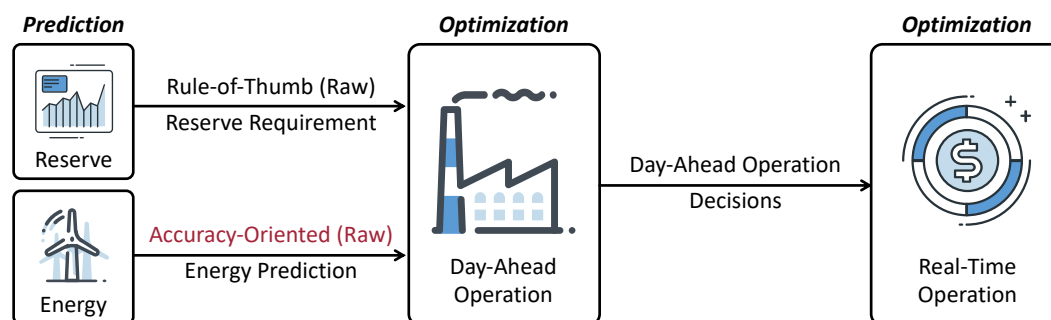
Approach 2:
Bilevel C-PO

Summary



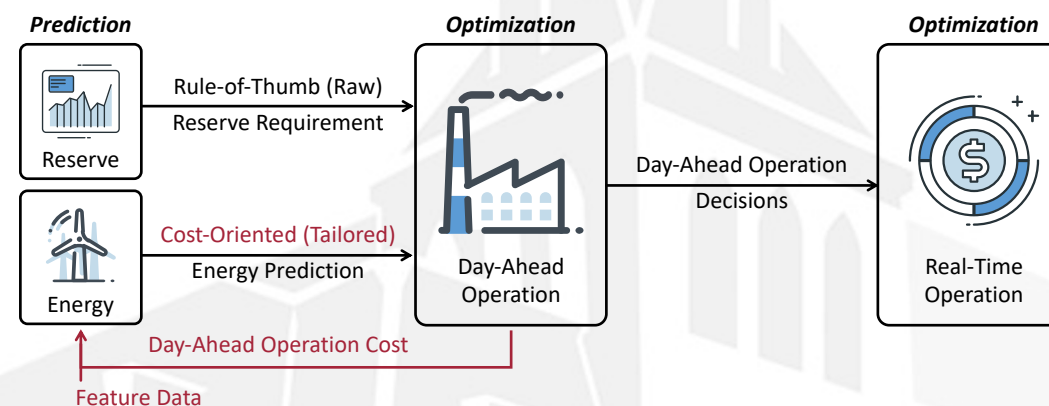
O-PO vs Feature-Driven C-PO

Open-Loop Predict-then-Optimize (O-PO)



- Train predictor with **statistical accuracy criterion** (Open-loop and accuracy-oriented)
- **Sequentially** predict and optimize (Predict-then-optimize)


Feature-Driven Closed-Loop Predict-and-Optimize (C-PO)



- Train predictor with **operation cost criterion** (Closed-loop and cost-oriented)
- **Simultaneously** predict and optimize (Predict-and-optimize)



Three Modules in Feature-Driven C-PO

- ***Data-Processing Module***
 - Feature selection
 - Training scenario selection
- ***Cost-Oriented Modeling-and-Training Module*** 
 - Model a cost-oriented empirical risk minimization problem
 - Solve the problem to get a well-trained predictor
- ***Closed-Loop Predict-and-Optimize Module***
 - Embed the predictor into the unit commitment model
 - Use the new model to predict and optimize simultaneously



Original Unit Commitment vs Prescriptive Unit Commitment

Original Unit Commitment Model

$$\begin{aligned} z(\hat{\mathbf{w}}) &= \min_{\mathbf{x}} \mathbf{c}^\top \mathbf{x} \\ \text{s.t. } \mathbf{x} &\in \mathcal{X}(\hat{\mathbf{w}}, \hat{\mathbf{r}}) \\ \mathbf{x} &\in \{0,1\}^m \times \mathbb{R}^n \end{aligned}$$

- Predict-then-optimize
- Accuracy-oriented prediction

Prescriptive Unit Commitment Model

$$\begin{aligned} z(\mathbf{f}) &= \min_{\mathbf{x}, \hat{\mathbf{w}}} \mathbf{c}^\top \mathbf{x} \\ \text{s.t. } \mathbf{x} &\in \mathcal{X}(\mathbf{H}^* \mathbf{f}, \hat{\mathbf{r}}) \\ \mathbf{x} &\in \{0,1\}^m \times \mathbb{R}^n \end{aligned}$$

- Predict-and-optimize (i.e., prescription)
- Cost-oriented prediction driven by feature \mathbf{f}

Why is prescription?

Description

What does the data look like?

Prediction

What will the data look like?

Prescription

What decisions should be made from the data?

Introduction

Approach 1:
Feature-Driven C-PO

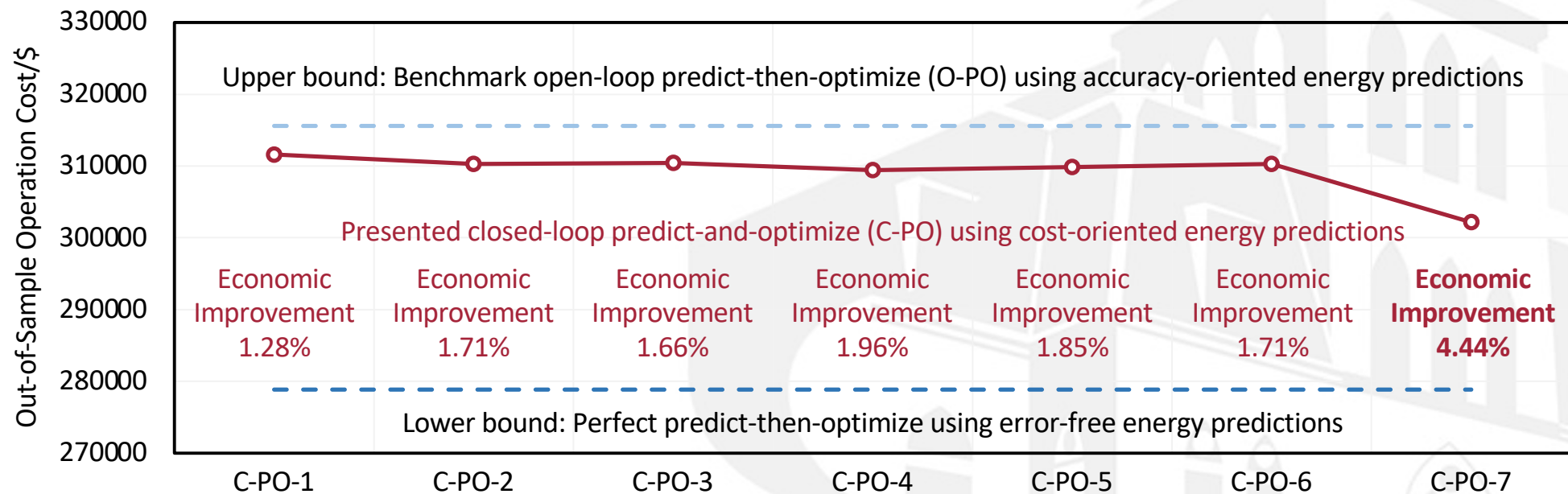
Approach 2:
Bilevel C-PO

Summary



Case on Median-Size System: Operation Economics

- **Benchmark: Predictions (Accuracy-Oriented) from a Belgian ISO**
- **One-Year-Long Dataset for Out-of-Sample Testing (01/01/2020 to 12/31/2020)**
- **7 C-POs with Different Configurations**



Introduction

Approach 1:
Feature-Driven C-PO

Approach 2:
Bilevel C-PO

Summary



Case on Median-Size System: Prediction Accuracy

- **Interesting Observations on Cost-Oriented Predictions**

- Less accurate from a statistical perspective.
- Lower MOPE and higher MUPE, i.e., more conservative.

- **Why Conservative?**

Predictors learn that an over-predicted energy availability may trigger expensive quick-start units, so they prefer to be under-predicted.

	Mean Absolute Error (MAE)/MW	Root Mean Square Error (RMSE)/MW	Mean Over-Prediction Percentage Error (MOPE)	Mean Under-Prediction Percentage Error (MUPE)
Accuracy-Oriented Prediction	104	130	34%	6%
Cost-Oriented Prediction	123	149	21%	12%

Introduction

Approach 1:
Feature-Driven C-PO

Approach 2:
Bilevel C-PO

Summary



Case on Large-Size 5655-Bus System

- Does the Lagrangian Algorithm Work?**
Enables training acceleration without optimality loss, showing potential for large-size system.

Average Training Time/second		Average Optimality Gap	
Solving Empirical Risk Minimization Directly	Solving Empirical Risk Minimization with Lagrangian Algorithm	Solving Empirical Risk Minimization Directly	Solving Empirical Risk Minimization with Lagrangian Algorithm
1604.2	930.2	0.65%	0.72%

42% faster

High-quality solution



Thinking

Feature-driven closed-loop predict-and-optimize performs well!

Can we make it better?

Introduction

Approach 1:
Feature-Driven C-PO

Approach 2:
Bilevel C-PO

Summary



Content

***Boosting
Power System
Operation Economics
via
Closed-Loop
Predict-and-Optimize
(C-PO)***

I

Introduction

II

Approach 1: Feature-Driven C-PO

III

Approach 2: Bilevel C-PO

IV

Summary

Introduction

Approach 1:
Feature-Driven C-PO

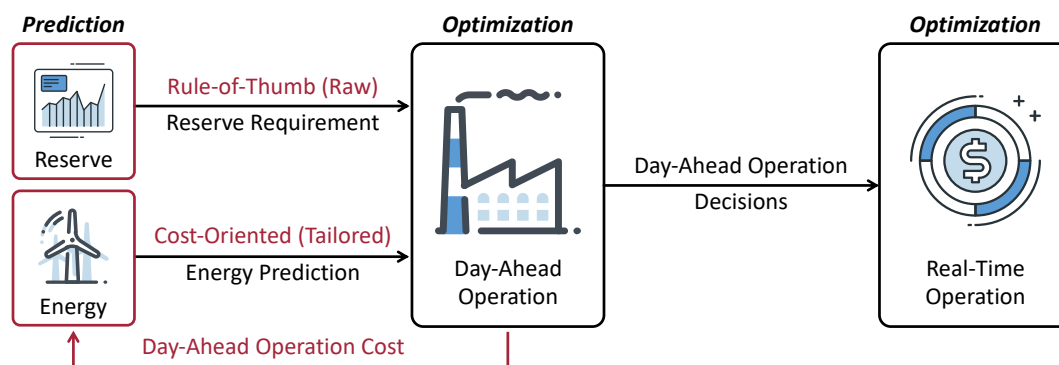
Approach 2:
Bilevel C-PO

Summary



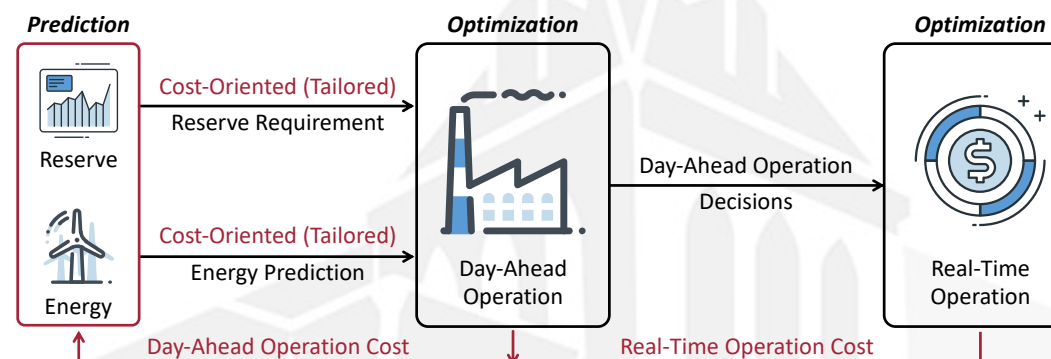
Feature-Driven C-PO vs Bilevel C-PO

Feature-Driven Closed-Loop Predict-and-Optimize (C-PO)



- Feed the **day-ahead cost** back
- Tailor **energy prediction**
- **Single-level** empirical risk minimization (ERM)

Bilevel Closed-Loop Predict-and-Optimize



- Feed the **day-ahead and real-time costs** back
- Jointly tailor **energy prediction and reserve requirements**
- **Bilevel** empirical risk minimization (ERM)



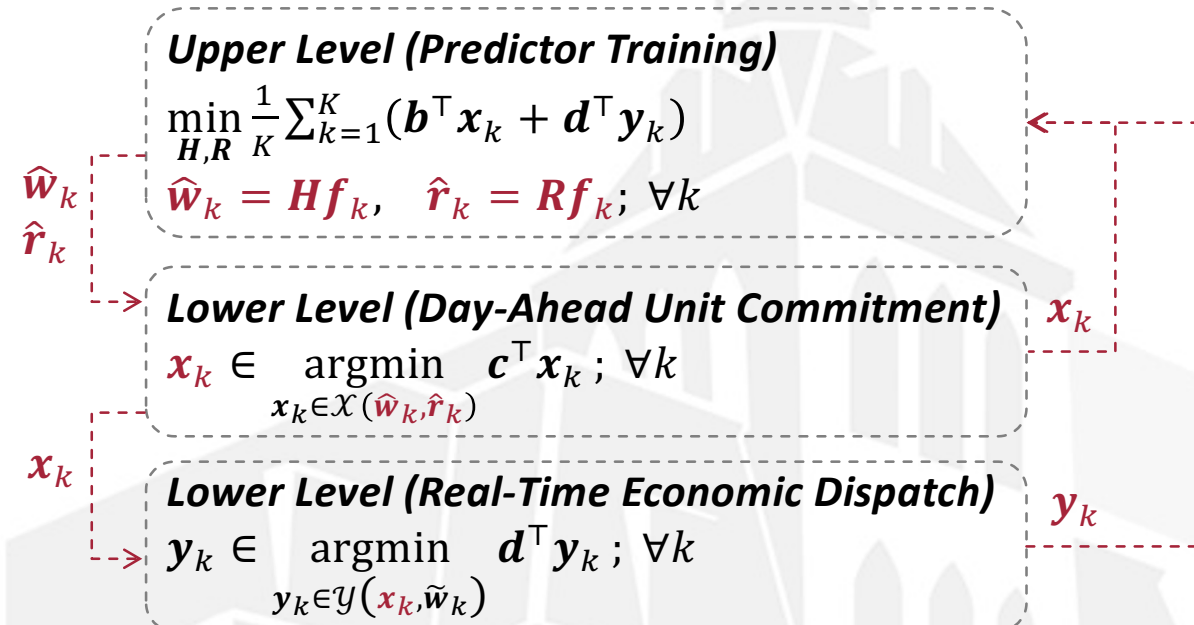
ERM Problem with Bilevel Mixed-Integer Programming Form

Previous Single-Level ERM

$$\begin{aligned} \min_{\mathbf{x}, \mathbf{H}} \frac{1}{K} \sum_{k=1}^K \ell_{OSS_k}^{SPO}(\hat{\mathbf{w}}_k, \tilde{\mathbf{w}}_k) \\ \text{s.t. } \hat{\mathbf{w}}_k = \mathbf{H} \mathbf{f}_k; \forall k \\ \mathbf{x}_k \in \mathcal{X}(\hat{\mathbf{w}}_k, \hat{\mathbf{r}}); \forall k \end{aligned}$$

- Training and in-sample operations have to share the same objective.
- In-sample decisions \mathbf{x} may NOT follow the least-cost principle, i.e., overfitting.

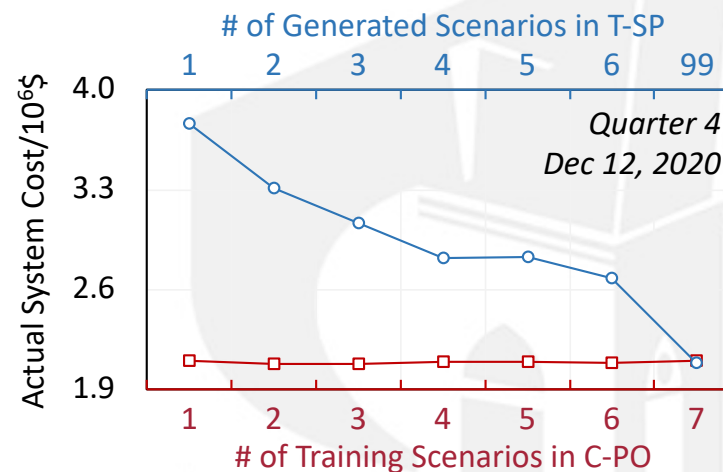
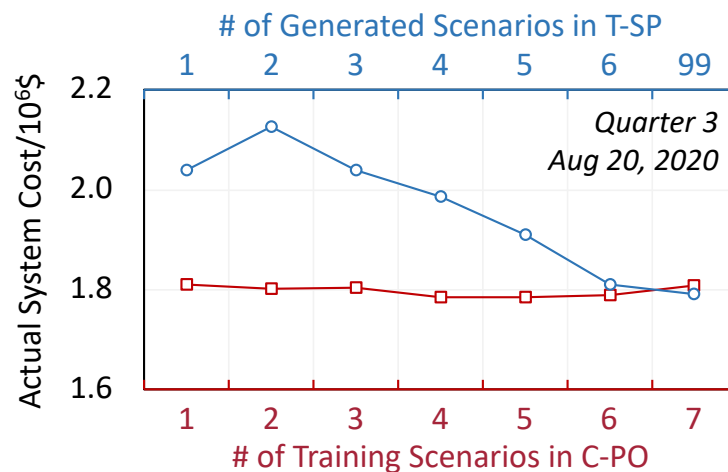
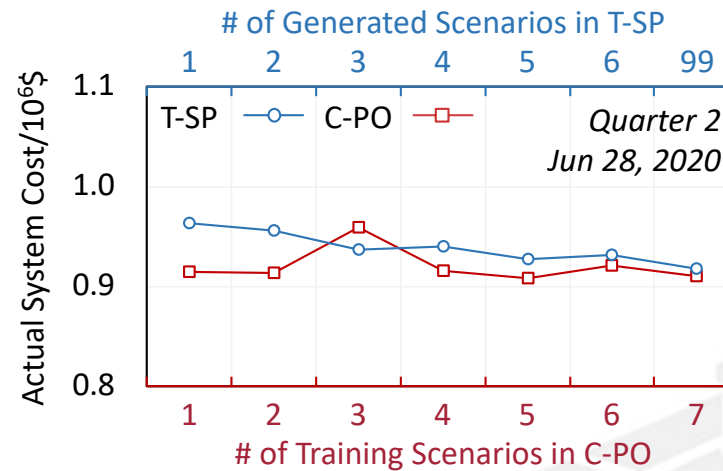
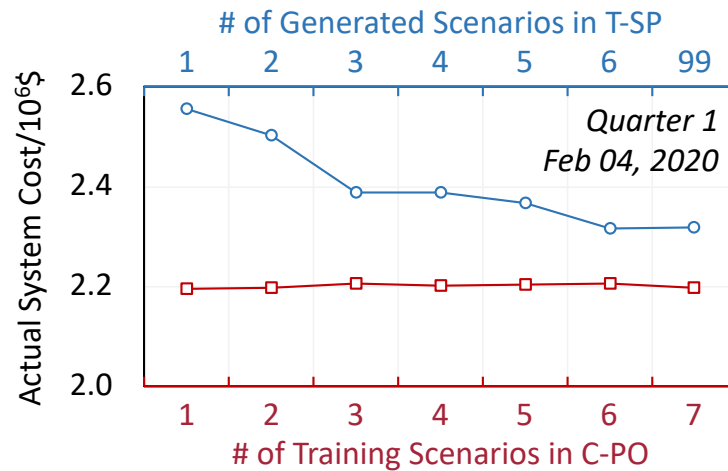
Upgraded Bilevel ERM



- The training and operations use their own objectives.
- More robust when scenarios are limited.



Case Study: C-PO vs Two-Stage Stochastic Programming (T-SP)



Observations

- C-PO is **economically competitive**
- C-PO needs **fewer scenarios**
- C-PO is **more stable**

Introduction

Approach 1:
Feature-Driven C-PO

Approach 2:
Bilevel C-PO

Summary



Content

***Boosting
Power System
Operation Economics
via
Closed-Loop
Predict-and-Optimize
(C-PO)***

I

Introduction

II

Approach 1: Feature-Driven C-PO

III

Approach 2: Bilevel C-PO

IV

Summary

Introduction

Approach 1:
Feature-Driven C-PO

Approach 2:
Bilevel C-PO

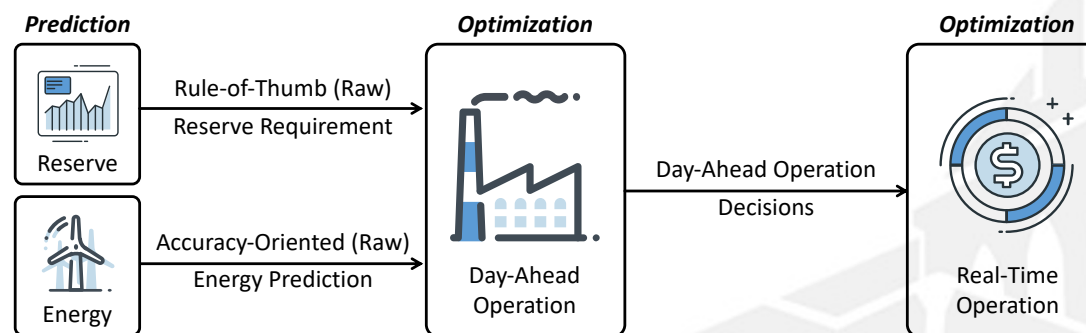
Summary



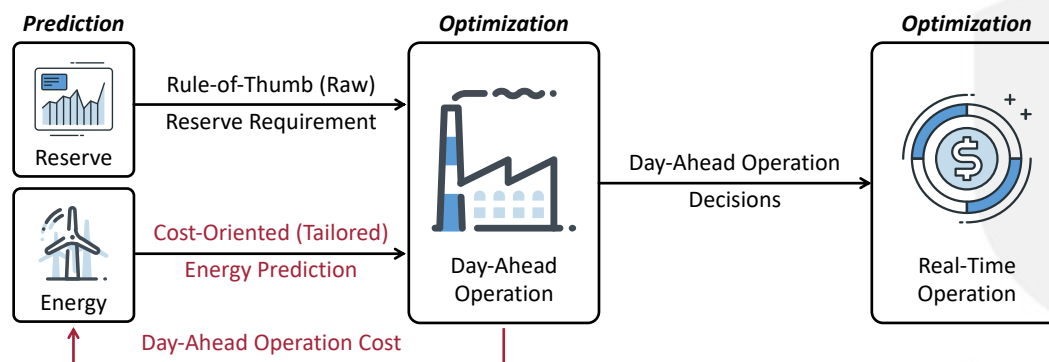
Summary

- Two Approaches Towards Improving Operation Economics

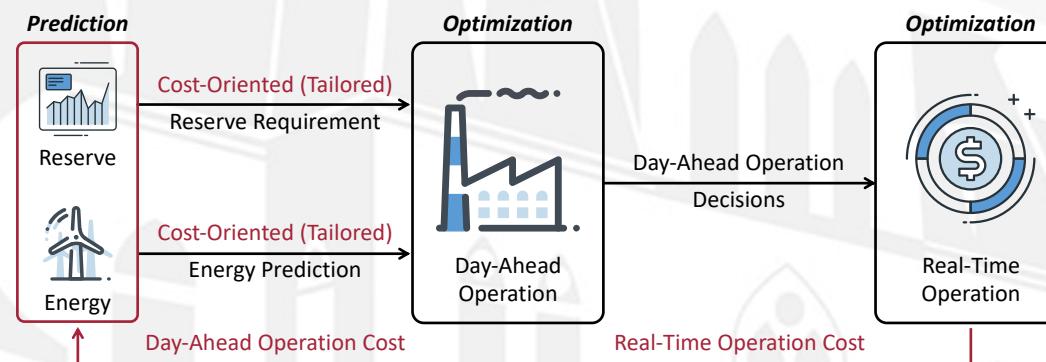
Traditional Open-Loop Predict-then-Optimize



Feature-Driven Closed-Loop Predict-and-Optimize



Bilevel Closed-Loop Predict-and-Optimize



Introduction

Approach 1:
Feature-Driven C-PO

Approach 2:
Bilevel C-PO

Summary



Major Conclusions

- **Conclusions**
 - The C-PO shows potential in **improving the system operation economics** by generating **cost-oriented predictions tailored for system operations**.
 - A cost-oriented energy prediction **may be slightly worse in accuracy**.
 - The bilevel empirical risk minimization problem enables the C-PO to lower down the operation cost using limited scenarios.



Summary

- ***Back to Essence: Just an Idea***

Closed-loop predict-and-optimize is basically **an idea that feeds the optimization back to the prediction** for improving the optimization performance.

- ***Potential Tools to Realize This Idea***

Deep learning, reinforcement learning, and so on.

- ***References***

1. Adam N. Elmachtoub and Paul Grigas, “Smart “Predict, then Optimize”,” *Management Science*, 2022.
2. Xianbang Chen, Yafei Yang, Yikui Liu, Lei Wu, “Feature-Driven Economic Improvement for Network-Constrained Unit Commitment: A Closed-Loop Predict-and-Optimize Framework,” *IEEE Transactions on Power Systems*, 2022.
3. Xianbang Chen, Yikui Liu, Lei Wu, “Towards Improving Operation Economics: A Bilevel MIP-Based Closed-Loop Predict-and-Optimize Framework for Prescribing Unit Commitment,” *arXiv:2208.13065*, 2023.

Introduction

Approach 1:
Feature-Driven C-PO

Approach 2:
Bilevel C-PO

Summary



Thank you!

For 2023 FERC Software Conference
xchen130@stevens.edu
Lei.wu@stevens.edu